



TYPE A1
**1 Bedroom Apartment
With Study**

APARTMENT SIZE
Approx. 65 m² / 700 ft²

APARTMENT NO.
#28-04
↑
#05-04

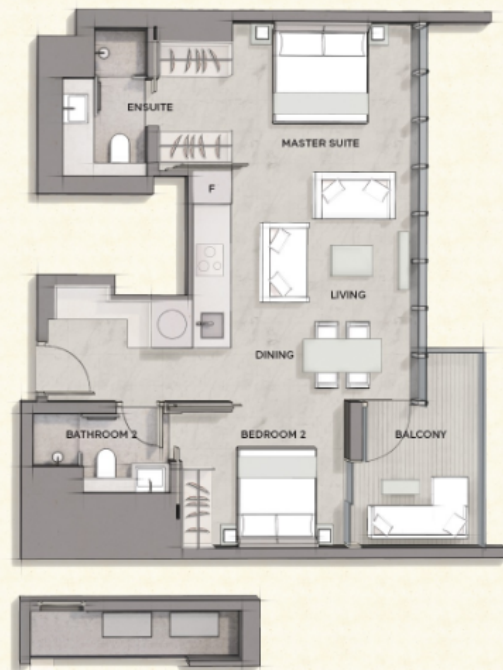




TYPE B1
**2 Bedroom
Apartment**

APARTMENT SIZE
75 m² / 807 ft²

#05-05 to #28-05

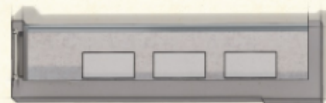


Area includes air-con necessary for pool/heating. The balcony shall not be enclosed unless with the approved balcony screen. Please refer to lay plans for orientation. All plans are subject to amendments as may be approved by the relevant authorities. Floor areas are approximate measurements and are subject to final survey.

TYPE C1
2 Bedroom
Apartment With
Private Lift

APARTMENT SIZE
76 m² / 818 ft²

#05-01 to #28-01



0 1M 3M

TYPE C2
**2 Bedroom
Apartment With
Private Lift**

APARTMENT SIZE
75m² / 807ft²

#05-08 to #28-08



Area includes air-con, accessories for balcony. The balcony shall not be enclosed unless with the approved balcony screen. Please refer to tag plans for orientation. All plans are subject to amendments as may be approved by the relevant authorities. Floor areas are approximate measurements and are subject to final survey.

TYPE D1
**2 Bedroom
Apartment With
Private Lift & Study**

APARTMENT SIZE
86 m² / 926 ft²

#05-02 to #28-02



0 1M 3M

Area includes air-con, accessory lot and balcony. The balcony shall not be enclosed unless with the approved balcony screen. Please refer to tag plans for orientation. All plans are subject to amendments as may be approved by the relevant authorities. Floor areas are approximate measurements and are subject to final survey.

TYPE D2
**2 Bedroom
Apartment With
Private Lift & Study**

APARTMENT SIZE
86 m² / 926 ft²

#05-07 to #28-07



Area includes air-con, accessory lot and balcony. The balcony shall not be enclosed unless with the approved balcony screen. Please refer to tag plans for orientation. All plans are subject to amendments as may be approved by the relevant authorities. Floor areas are approximate measurements and are subject to final survey.

TYPE D3
**2 Bedroom
Apartment With
Private Lift & Study**

APARTMENT SIZE
86 m² / 926 ft²

#05-06 to #28-06



0 1M 3M

Area includes air-con, accessibility and balcony. The balcony shall not be enclosed unless with the approved balcony screen. Please refer to tag plans for orientation. All plans are subject to amendments as may be approved by the relevant authorities. Floor areas are approximate measurements and are subject to final survey.

TYPE E1
**3 Bedroom
Apartment With
Private Lift & Study**

APARTMENT SIZE
107m² / 1,152 ft²

#05-03 to #28-03



Area includes air-con necessary for installation. The balcony shall not be enclosed unless with the approved balcony screen. Please refer to layout for a detailed view. All areas are subject to amendments as may be approved by the relevant authorities. Floor areas are approximate measurements and are subject to final survey.